

**1**

# Flying W Gardens

Nursery, Landscaping and Supplies  
Annuals • Perennials • Trees • Shrubs

Open April 15th Thru September 15th & Sundays in May & June

218-732-9782  
2 Miles South of Itasca Park on Hwy 71, Park Rapids, MN

Trail Information Available

**2**

# H3 Performance

PARK RAPIDS, MN

218-255-1566 • 218-252-0367

Logan & Sarah Hanisch/Owners

Providing service and performance for all major powersports brands!

ATVs • PERSONAL WATERCRAFT  
LAWN EQUIPMENT • SNOWMOBILES & MORE!

WWW.H3-PERFORMANCE.COM

**3**

# TWO INLETS

Country Store

ELS License • Bait & Tackle  
Gas • Oil • Propane • Ice • ATM  
Beer • Pizza • On-Sale • Groceries  
Wireless Internet

55735 County Hwy 44 • Park Rapids, MN 56470

218-732-5235 OPEN 7 DAYS A WEEK

TwoInletsCountryStore.com

**4**



**Affinity**  
REAL ESTATE, INC.

**Lou Eischens**  
Office: 218-237-3333 Cell: 218-820-5285  
Fax: 218.237.3377 Lou@AffinityRealEstateInc.com

MLS

**5**

# THELEN'S EXCAVATING AND PRECAST

Backhoe • Basement • Road Work • Septic Systems  
Trenching • Sand & Gravel • Black Dirt • Landscaping  
Bobcat Work • Snow Removal

Precast Concrete:  
Septic Tanks • Patio Block • Parking Curb

Leonard Thelen  
33438 535th Ave.  
Park Rapids, MN 56470

Excavating: 218-732-5345  
Precast: 218-732-1458

**6**

# Charlie's Boats & Marine

1404 E 1st St/Hwy 34E, Park Rapids ~ 218-732-3451

Arctic Cat Snowmobiles • Weeres & Ercoa Pontoons  
Alumacraft Boats • Evinrude/Johnson & Suzuki Outboards  
Motor & Trailer Rentals • Boat, Motor & Pontoon Storage

EXPERT SERVICE & REPAIR - REASONABLE RATES

**7**



# 34 EAST

Lawn & Sport

Dennis Dodge - Sales and Service  
218-237-5670

18884 Eagle Bend Road Park Rapids, MN 56470  
3 miles East of Park Rapids on Hwy. 34  
e-mail: 34East@arvig.net

**8**

HOME OF THE THUNDERBURGERS!

Deluxe Accommodations



# Ice Cracking Lodge & Resort

Restaurant / Lounge

218-573-3631  
1-800-841-3132 www.icecrackinglodge.com

**9**



Summer Hours:  
Mon.-Thurs: 9 am - 11 pm  
Fri. & Sat: 9 am - 1 am  
Sun: 11 am - 11 pm  
Kitchen Closes at 10 pm

Winter Hours:  
Mon.-Thurs: 11 am - 11 pm  
Fri. & Sat: 9 am - 1 am  
Kitchen Closes at 10 pm

31699 US Hwy 71 • Park Rapids  
218-732-1994

**10**



# STATE BANK

of Park Rapids

218-732-3366  
888-560-3366

PO Box 31 Park Rapids, MN 56470 Fax 218-732-8829

www.statebankofparkrapids.com

**11**

# Itasca Junction

Convenience Store, Gas, Diesel, E85  
Groceries, Ice, Bait, Licenses  
Food, Pizza,  
Ice Cream & Fresh Baked Goodies

JCT. HWY 71 & 200 BY ITASCA STATE PARK

218-266-3377

ATV PARKING AVAILABLE HERE!

**12**



# LOBOS BAR & GRILL

LEGENDARY FOOD & SPIRITS

- Karaoke on Saturday Nights • Pull Tabs
- Full Service Bar • Full Service Cabins
- Dine-In or Carry Out

Hours: Mon. - Sat. 11 a.m. - 1 a.m. • Sun. 12 p.m. - 12 a.m.

Located on Hwy 200 next to Itasca State Park  
3 3/4 mi. North of East Entrance or 1 1/4 mi. South of North Entrance

218-266-3611

**13**

# John's Body Shop

John H. Vrieze  
Owner

Phone (218) 732-3273  
Fax # (218) 732-3635

1007 South Park Avenue  
Park Rapids, MN 56470



**14**

Wine Tasting  
Fridays 3-7PM

Great selection with friendly service at competitive prices

Senior Citizens Save 10% Every Tuesday!

Mon.-Sat 9AM-8PM  
3.5 miles E. of Park Rapids  
Jct. Hwys. 34 & 226  
Large Parking Lot • Easy Access

(218) 732-1770



**15**

# Wevley Funeral Home

107 First St. NW, Sebeka, MN

Willard Wevley (Director)  
Willie and Paula Wevley

PO Box 242 Sebeka, MN 56477 218-837-9455  
PO Box 42 Menahga, MN 56464 218-564-9455

**16**

OVER 40 YEARS!



# HAAS PRINTING, INC.

One to full color printing & mailing service

Check out the capabilities of our web site:  
www.haasprinting.com

300 INDUSTRIAL PARK RD. PHONE (218) 732-1430  
P.O. BOX 271 1-800-852-4227  
PARK RAPIDS, MN 56470 FAX (218) 732-3852

**17**

# GARY'S TRAILER SALES

Custom Trailers Built To Suit Your Needs

- Heavy Duty Equipment & Bobcat • Car Haulers
- Golf Carts • Utility • ATV • Garden Tractor • Motorcycles
- Stock Trailers • Enclosed Cargo Trailers
- Mini Choppers & Trike Trailers and more!

Parts & Accessories

12 mi. North on Hwy. 71 to Two Inlets Rd., 7 mi. West

218-732-3941 1-800-630-8638  
www.gtrailersales.com • garyvsat@gmail.com

**18**

Welcome ATVer's!

# Åvāy up Nort Campgrounds

Δuff-dā Δya sure ya betaha Δ

11090 Norway Drive on Hwy. 71 & 200 ~  
Close to East Entrance to Itasca State Park

218-266-0093 • Dave 218-780-0695 • Sue 218-780-1690  
OWNERS: Dave & Sue Tibbetts  
dtibbetts000@centurytel.net

**19**

# Elbow Lake Store & Bar

Located on the North Shore of Big Elbow Lake

- ★ Large parking lot for ATV trailers
- ★ LP Fill Station
- ★ Hot Pizza
- ★ Basket Meals
- ★ Fishing Tackle
- ★ Beer
- ★ Setups
- ★ Groceries
- ★ Gas & Oil
- ★ Video Slot Machines

ROGER & ALISA NELSON  
Phone 218-734-2504 • Waubun, MN

**20**



# JOIN Forest Riders ATV Club

732-5057

Meetings are 4th Thursday of each month at Clover Town Hall

(No meetings November, December and January)

# 2010 - 2011 Forest Riders ATV Club Trail Map



Be a friend to your environment...  
Leave it as you found it!

For Spring Riding Call for Trail Openings  
(218) 732-3309 or (218) 732-5235

www.forestriderstrailclub.com

Vice-Pres. - Gary Nasser - 732-5348  
Treasurer - Audrey Eischens - 732-5057  
Secretary - Carol Johnson - 237-2620  
Trail Administrator - Tim Eischens - 732-5235

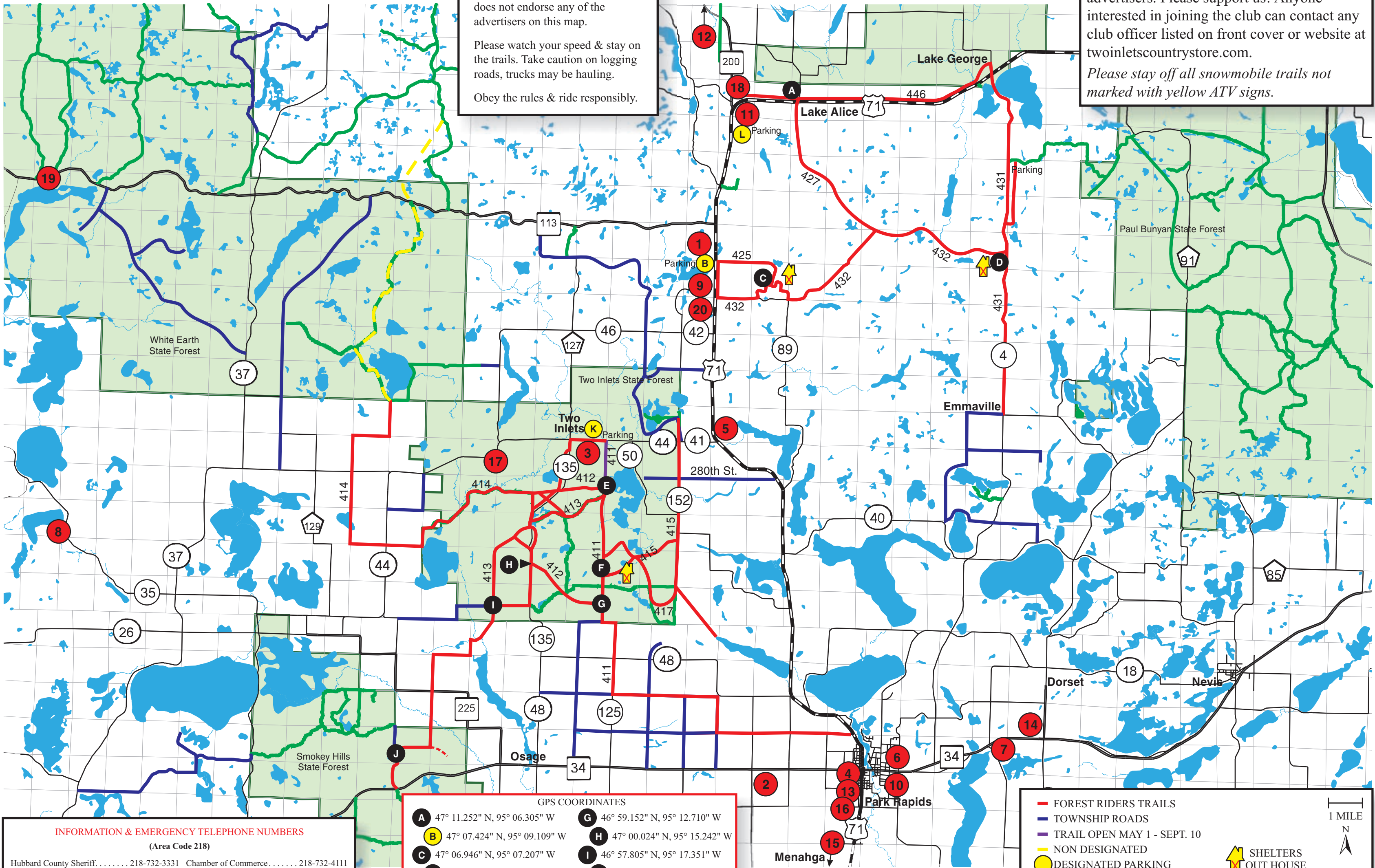
This map identifies trails that are part of the Grant-in-aid trail system & funded by the DNR. The DNR does not endorse any of the advertisers on this map.

Please watch your speed & stay on the trails. Take caution on logging roads, trucks may be hauling.

Obey the rules & ride responsibly.

**Help Keep The Trails** This map is provided by the Forest Riders ATV Club and advertisers. Please support us! Anyone interested in joining the club can contact any club officer listed on front cover or website at [twinletscountystore.com](http://twinletscountystore.com).

*Please stay off all snowmobile trails not marked with yellow ATV signs.*



**INFORMATION & EMERGENCY TELEPHONE NUMBERS**  
(Area Code 218)

Hubbard County Sheriff . . . . . 218-732-3331	Chamber of Commerce . . . . . 218-732-4111
Park Rapids Police Department . . . 218-732-3331	D.N.R. Conservation Officer . . . 218-255-2170
Park Rapids Fire Department . . . . 911	D.N.R. . . . . . 218-732-3309
St. Joseph's Hospital . . . . . 218-732-3311	Hubbard County ATV Deputy . . . 218-732-2581

**EMERGENCY . . . . . 911**

**GPS COORDINATES**

<b>A</b> 47° 11.252" N, 95° 06.305" W	<b>G</b> 46° 59.152" N, 95° 12.710" W
<b>B</b> 47° 07.424" N, 95° 09.109" W	<b>H</b> 47° 00.024" N, 95° 15.242" W
<b>C</b> 47° 06.946" N, 95° 07.207" W	<b>I</b> 46° 57.805" N, 95° 17.351" W
<b>D</b> 47° 07.762" N, 94° 59.381" W	<b>J</b> 46° 55.363" N, 95° 19.785" W
<b>E</b> 47° 00.770" N, 95° 12.722" W	<b>K</b> 47° 03.068" N, 95° 13.045" W
<b>F</b> 47° 00.152" N, 95° 12.704" W	<b>L</b> 47° 11.212" N, 95° 08.369" W

- FOREST RIDERS TRAILS
- TOWNSHIP ROADS
- TRAIL OPEN MAY 1 - SEPT. 10
- NON DESIGNATED
- FOREST ROADS
- ◆ ATV TRAILS MARKED YELLOW & GREEN

**DESIGNATED PARKING**

**SHELTERS OUT HOUSE**

East/West - Even Numbers  
North/South - Odd Numbers

RESPECT PRIVATE PROPERTY. Please, don't litter.

1 MILE  
N